

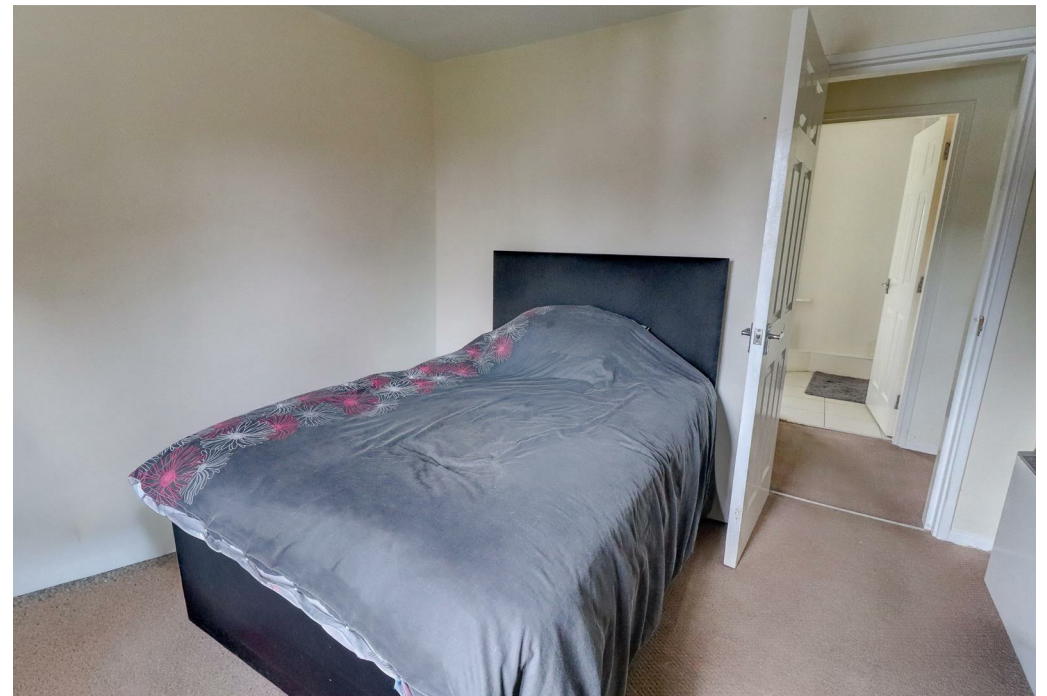


Spinney Drive, Leicester, LE9 9FG

Property Description

****Available 21st March 2026**** ****Deposit Alternative Available**** Located in Botcheston, Leicestershire, you will find this two-bedroom flat. Situated on the first floor of a private development, this property offers a delightful blend of comfort and convenience. The flat boasts two well-proportioned bedrooms, providing ample space for a comfortable living environment. The bathroom is thoughtfully designed, ensuring both functionality and style. One of the standout features of this property is the abundance of storage available, making it easy to keep your living space tidy and organised. The flat is set within a peaceful community, offering a serene atmosphere while still being within easy reach of local amenities. This property is for people aged 55+. Energy Rating D. Council tax band A







Key Features

- Available 21st March 2026
- Deposit alternative available
- Botcheston Leicester
- Flat
- Two bedrooms
- Unfurnished
- No Garden
- On Road Parking Available
- Council Tax Band A
- Energy rating D

£650 PCM